



Building Excellence



NEENAH
HIGH SCHOOL

NJSD New High School

Miron Project Number 210210

Monthly Project Progress Report February 2022



Building Excellence

Table of Contents

- Executive Summary
- Action Items
- Design Items
- Quality
- Schedule
- Risk Management
- Progress Photos
- Glossary of Terms

In this issue...

- Footings & Foundations
- Geothermal Well Drilling
- Bid Package 05 Contracts
- Structural Steel, Masonry, & Precast



Distribution List

Dr. Mary Pfeiffer
District Superintendent
Neenah Joint School District
mpfeiffer@neenah.k12.wi.us
920-751-6800 x 10100

Tim Kippenhan
Vice President & COO
Miron Construction Co., Inc.
Tim.kippenhan@miron-
construction.com
920-969-7053

Matt Wolfert
President
Bray Architects
mwolfert@brayarch.com
414-226-0200

Amanda Manteufel
Project Executive
Miron Construction Co., Inc.
Amanda.manteufel@miron-
construction.com
920-328-1777

Ryan Sands
Vice President
Bray Architects
rsands@brayarch.com
414-290-1981

Michael Huffman
President
Huffman Facility Development
Mhuffman@huffmanfd.com
608-332-4112

Our *commitment* reaches beyond construction;
our *passion* brings *dreams* to life.



Building Excellence

Executive Summary

Site Activities

- Storm piping install is about 90% complete
- Excavation in the cafeteria and admin spaces is taking place
- Concrete footings and foundations are proceeding in the cafeteria and loading dock areas
- Stone base continues to be placed in the building footprint
- Structural steel and deck started to be erected in the classroom wings
- Masonry started on the two stairwells next to the weight room
- Erection of precast concrete wall panels started in the auditorium
- Geothermal well drilling continued with three drill rigs now on site
- Building Information Modeling (BIM) has started
- Maintaining the site during winter conditions

Bid & Award

- All contracts awarded for Bid Package 05

Major Milestones / Accomplishments

- Vertical construction has started
- Football bleacher design was sent to the State for final review

Upcoming Milestones

- Elevated concrete slab pour in the west classroom wings
- Issue final compiled construction plan set

Key Issues and Concerns

- Material availability and increasing lead times

We exist to create...

Relationships

...built on honesty and integrity, with clients, partners, and employees.
At Miron, people come first.



Building Excellence

Action Items

Key Accomplishments

- Vertical construction has started
- BIM coordination started

Areas of Concern

- Material availability
- Material cost increases
- Submittal review times

Action Item List

- Continue to monitor material lead times and material delivery dates
- Maintain safe winter conditions on project site
- BIM contractors to follow current schedule and coordinate with other subcontractors

We exist to fulfill...

Dreams

...and assist our clients in turning their visions into realities.



Building Excellence

Design Items

Accomplishments

- Final design model was released to Miron to start BIM coordination

Areas of Concern

- Critical to continue to complete submittal revisions and respond to RFI's to maintain project schedule

Submittals

- Submittals from Bid Package 01 contractors are being received and reviewed
98% of submittals have been submitted and reviewed
- Submittals from Bid Package 2A, 2B, and 2C contractors are being received and reviewed
80% of submittals have been submitted and reviewed
- Submittals from Bid Package 3A contractors are being received and reviewed
95% of submittals have been submitted and reviewed
- Submittals from Bid Package 3B contractors are being received and reviewed
100% of submittals have been submitted and reviewed
- Submittals from Bid Package 04 contractors are being received and reviewed
70% of submittals have been submitted and reviewed
- Submittals from Bid Package 05 contractors are being received and reviewed
10% of submittals have been submitted and reviewed

Requests for Information

- 34 RFI's were generated this month and 32 have been answered and returned
- 2 open RFI's that the design team will return by early March

We exist to promote...

Innovation

...and be the leader in providing and utilizing the best tools, processes, and safety measures.



Building Excellence

Quality

Inspections

- Fox Crossing Utility
- DNR Storm Water & Utility
- Compaction Testing
- Concrete Testing
- Rebar Inspection
- Bearing Capacity
- Structural Steel Testing
- State & Local Building Inspections

Test Results

- Fox Crossing inspecting storm sewer as it is being installed
- Concrete test reports are being received as areas are poured
- Geothermal well testing as each well is drilled

Quality Issues & Resolution

- None

We exist to develop...

Solutions

...that exceed the needs and requirements of our clients, partners, and employees.



Building Excellence

Schedule Summary

Schedule Update

Labor Force Report

Veit - averaging 10 workers each day working on earthwork and installing storm sewer piping
Miron Concrete - 36 workers setting forms and pouring concrete footings and foundations
Miron Steel - 20 workers erecting steel in the classroom wings
Miron Masonry - 12 workers setting block in the two gym stairwells
ECS Midwest - 1 worker testing concrete ensuring it meets the specification
Wisconsin Rebar - 2 workers tying and setting concrete reinforcing steel
Bertram Drilling - 9 workers drilling for the geothermal field
Point of Beginning - 1 worker each day staking for underground utility lines
McMahon - 1 worker each day monitoring underground utility installation

Delays

- Weather
 - 1 weather day in February

- Materials & Labor
 - Currently None

- Design
 - Currently None

- Owner
 - Currently None

Key Issues / Concerns / Recommended Action Steps

- Reviewing and answering Submittals & RFI's in order to maintain schedule
- Continuing to monitor material lead times

We exist to serve each...

Community

...in which we live and work, giving back whenever and wherever we can.



Building Excellence

Risk Management

Key Safety Statements & Focus Issues

- 330 team members have been orientated to date
- Approximately 85-95 people on-site per-day
- Orientations and background checks completed before being permitted to work on site
- Stretching and safety meeting is daily at 7:00 AM with all contractors
- Weekly site wide stand-down safety meeting
- Daily site safety audits
- Safety focus has been on heavy machinery and excavations/ trench safety with the ongoing concrete footing install and now structural steel erection
- Heavy equipment includes: 2 dump trucks, 2 front end loaders, 6 back hoes, 1 roller, 2 dozers, 1 off-road haul truck, 7 forklifts, 5 cranes, 3 UTV's, and 12 company vehicles
- Communication is key to the team's success with the amount of equipment moving on site
- Site traffic control is in place due to lots of moving equipment and vehicles on site
- Excavations for concrete footings and foundations are barricaded when no work is being put in place
- Changing weather conditions throughout the day as temperatures fluctuate throughout the day
- Preparing the site for snowfall as well as freezing conditions as winter conditions continue
- Maintaining site access routes free of snow and ice
- Monitoring carbon monoxide levels in temporary enclosures



Progress Photographs



First day of structural steel in West classroom wing
(02/03/2022)



Structural steel going up in West classroom wing
(02/08/2022)



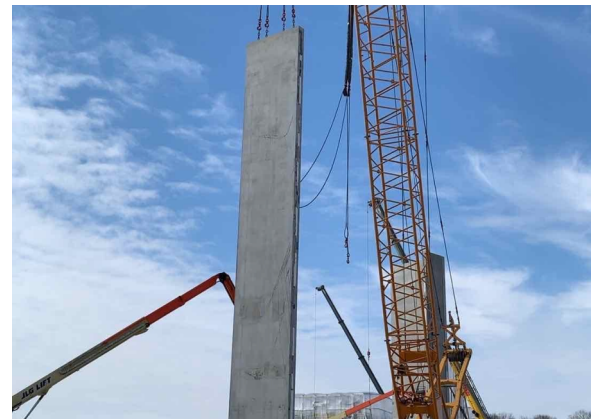
Structural steel in East classroom wings
(02/14/2022)



Heated masonry enclosure next to future weight room
(02/16/2022)



Entire north side of the building structural steel
(02/24/2022)



63' tall precast wall panel getting set in the auditorium
(02/28/2022)



Building Excellence

Progress Photographs



Masonry wall going up along the West side of the competition gym
(02/28/2022)



Auditorium precast walls get braced with structural steel at the top
(02/28/2022)



Aerial view of the site looking South
(02/28/2022)



Building Excellence

Glossary of Terms

- **Bid Package (BP):** a set of documents that contains drawings, specifications, and scopes of work for a specific set of construction activities that are sent out to contractors for competitive bidding. Ex: Bid Package 01 contained all the drawings, specifications, and scopes for the exterior site portion of work on the project.
- **Request for Information (RFI):** a document during the construction phase of a project used to get clarification on the project documents between the contractor and the architect/engineer. Ex: The contractor submits an RFI to the architect about a missing dimension on the drawings.
- **Submittal:** documents such as shop drawings, product data, material data, and samples to confirm that the correct products will be installed on the project. Ex: The flooring contractor submits a sample of the carpet they plan to install to ensure it is the correct color.
- **Compaction Report:** a report generated by an engineer noting how dense the ground is in a certain location. Ex: The soil below a road is tested to ensure the soil is firm enough to handle the weight of cars driving over it.
- **Concrete Masonry Unit (CMU):** usually a rectangular prism shaped structural member that is cast or extruded and are comprised of designed aggregates, cement, and water. Ex: The most common occurrence of CMU units are in stairwells of a commercial building. They look like legos stacked on top of one another.
- **Building Information Modeling (BIM):** the process of identifying and resolving constructability issues using 3D models developed by the design team and subcontractors. 3D models are overlaid, conflicts are identified, model adjustments are made, and installation drawings are produced which allow field teams to accurately install their systems to match the final coordinated 3D model.
- **Precast Concrete Wall Panel:** a structural piece of concrete that is cast offsite at a production facility to specific dimensions in a mold, cured for a duration of time, and set in a final location. Precast panels can be used in lieu of a masonry wall, concrete block wall, or steel stud wall. The new high school will have precast wall panels in the auditorium and the auxiliary gym.

We exist to develop...

Solutions

...that exceed the needs and requirements of our clients, partners, and employees.